



AMERICAN CONSTRUCTION METALS

6938 N. US Hwy. 41
Apollo Beach, FL 33572

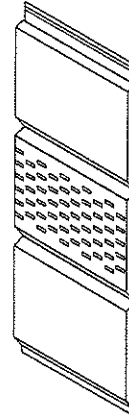
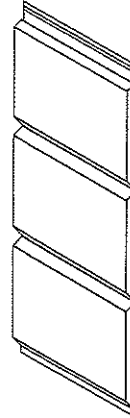
"TRIPLE 4" & "QUAD 4" ALUMINUM SOFFIT

GENERAL NOTES

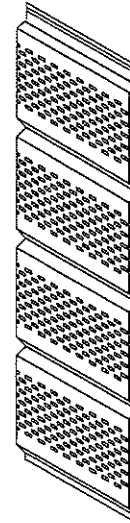
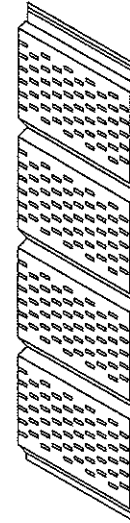
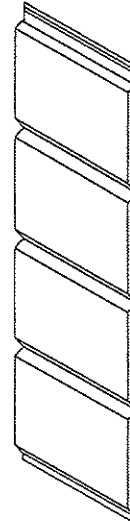
1. This product has been evaluated and is in compliance with the 5th Edition (2014) Florida Building Code excluding the "High Velocity Hurricane Zone" (HVHZ).
2. Product anchors shall be as listed and spaced as shown on details. Anchor embedment to base material shall be beyond wall dressing or stucco.
3. Site conditions not covered by this drawing are subject to further engineering analysis.
4. Wood/CMU wall construction, by others, must be designed properly to receive loads from the soffit and/or 2" x 2" batten strips.
5. Aluminum soffits shall conform to the requirements of FBC Section 1404.5.1 and labeled according to FBC Section 1710.9.

TABLE OF CONTENTS

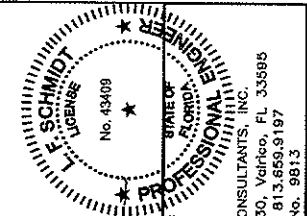
SHEET #	DESCRIPTION
1	Typical elevations & general notes
2	Panel details
3	Soffit details & design pressures
4	Soffit details & design pressures
5	Soffit details, design pressures & bill of materials



TRIPLE 4 (T4)
T-4-012 (.0115" THICK)
T-4-014 (.0135" THICK)



QUAD 4 (Q4)
Q-4-012 (.0115" THICK)
Q-4-014 (.0135" THICK)



Documents Prepared By:
Lyndon F. Schmidt
P.E. No. 43409
LFS
3-4-15

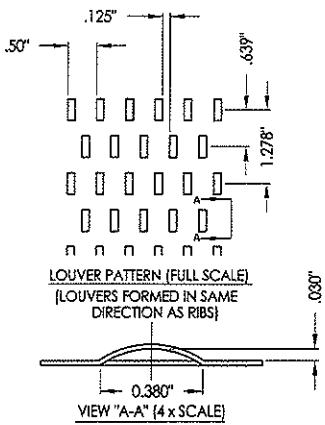
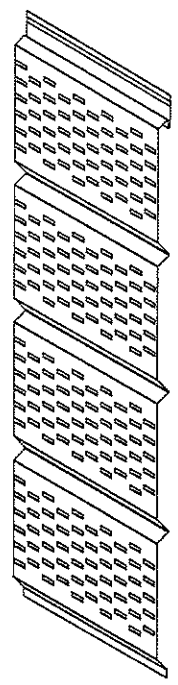
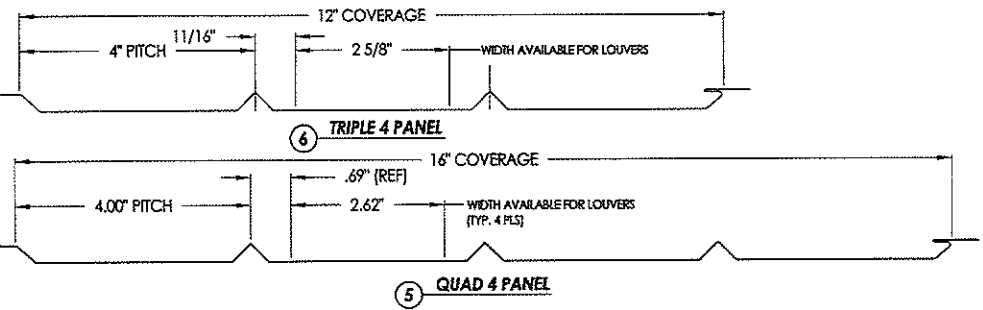
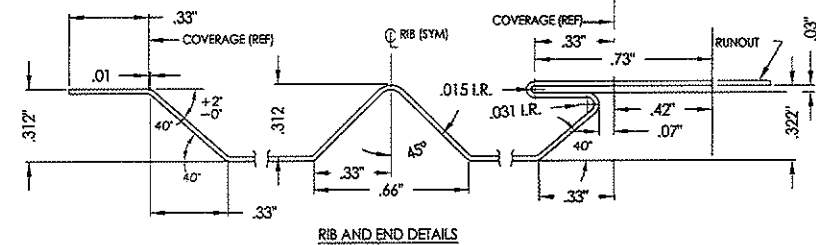
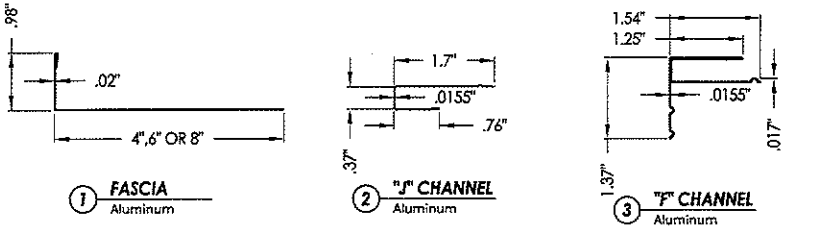
RW
BUILDING CONSULTANTS, INC.
P.O. Box 230, Vero Beach, FL 33595
Phone No.: 813.859.9197
FBPE, C.A. No. 9813

PRODUCT: ALUMINUM SOFFIT	
PART OR ASSEMBLY: TYPICAL ELEVATIONS & GENERAL NOTES	
DATE: 1/9/09	SCALE: N.T.S.
DWG. BY: JK	CHK. BY: LFS
DRAWING NO.: FL-12019.1	
SHEET 1 OF 5	

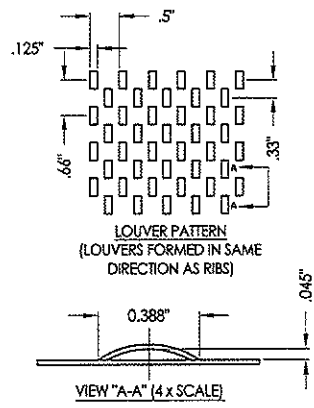
R:\Clients\American Construction Metals\PERMANENT\Florida Product Approvals\FL-12019\Drawings\Current\FL-12019.dwg, FL-12019.1

© 2009 R.W. BUILDING CONSULTANTS INC.

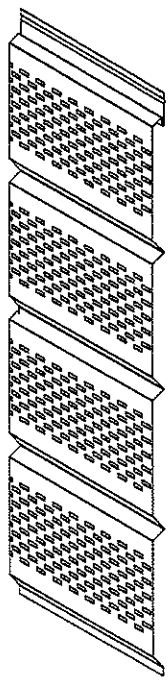
SOFFIT AIR FLOW TABLE								
SOFFIT TYPE		AIR FLOW		SOFFIT TYPE		AIR FLOW		
		FREE FLOW AREA SQ. IN/SQ.FT	% FREE FLOW AREA			FREE FLOW AREA SQ. IN/SQ.FT	% FREE FLOW AREA	
Triple 4	CENTER VENT NARROW PATTERN	3.91	2.71%	Quad 4	FULL VENT NARROW PATTERN	11.74	8.15%	
	FULL VENT NARROW PATTERN	11.74	8.15%			FULL VENT WIDE PATTERN	3.69	2.56%
	FULL VENT WIDE PATTERN	3.69	2.56%				3.69	2.56%



5 6 **FULL VENT - WIDE PATTERN**
(Louvers formed in same direction as ribs)



5 6 **FULL VENT - NARROW VENT PATTERN**
(Louvers formed in same direction as ribs)

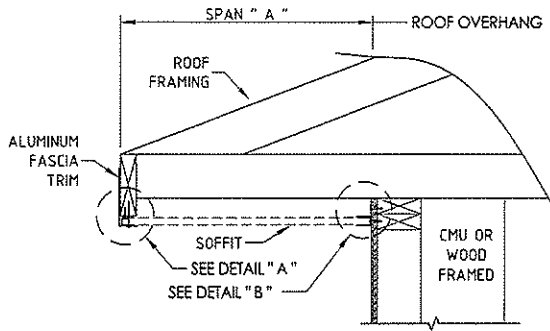


Documents Prepared By: **F. Schmidt**
 License No. 43409
 State of Florida Professional Engineer

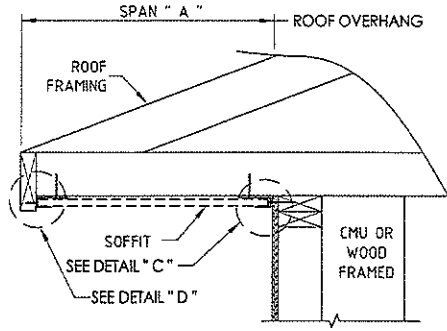
Prepared By: **R.W.**
 Building Consultants, Inc.
 P.O. Box 230, Valrico, FL 33595
 Phone No.: 813.659.9197
 FBPE C.A. No. 9813

PRODUCT:		ALUMINUM SOFFIT		PART OR ASSEMBLY:		PANEL DETAILS	
NO.	DATE	BY	CHK.	DATE	BY	CHK.	REVISIONS
1	01/01/09	JK	JK				
2	03/02/15	LFS	FBC				UPDATE TO 5TH ED. (2014) FBC
3	11/21/11	JK	FBC				UPDATE FOR 2010 FBC
4	3/9/10	JK					ADD DETAILS
5	3/31/09	JK					ADD DETAILS

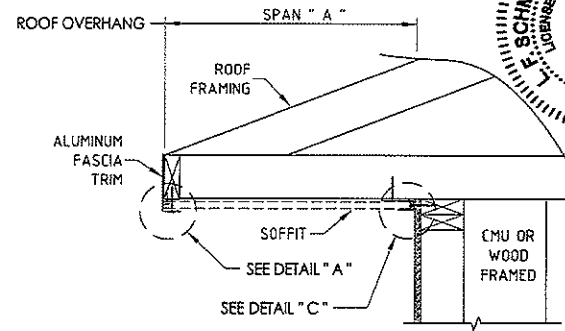
DATE: 01/01/09
 SCALE: N.T.S.
 DWS. BY: JK
 CHK. BY: LFS
 DRAWING NO.: FL-12019.1
 SHEET 2 OF 5



SIDE VIEW - SINGLE SPAN w/F-CHANNEL
(Shown w/ truss/framing cantilever)



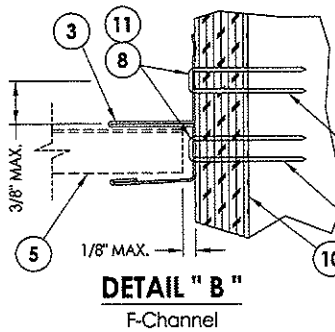
SIDE VIEW - SINGLE SPAN w/J-CHANNELS
(Shown w/ truss/framing cantilever)



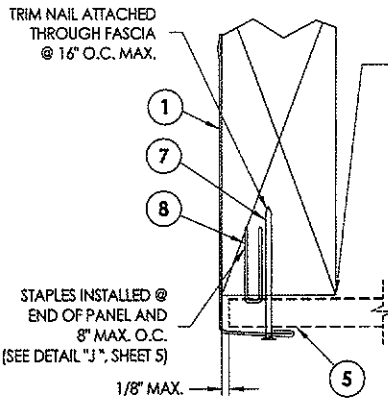
SIDE VIEW - SINGLE SPAN w/J-CHANNEL
(Shown w/ truss/framing cantilever)

SINGLE SPAN LENGTH "A"	DESIGN PRESSURE (PSF)	
	POSITIVE	NEGATIVE
8"	+70.0	-141.0
10"	+60.0	-60.0
12"	+50.0	-50.0
14"	+38.5	-38.5
16"	+30.0	-30.0

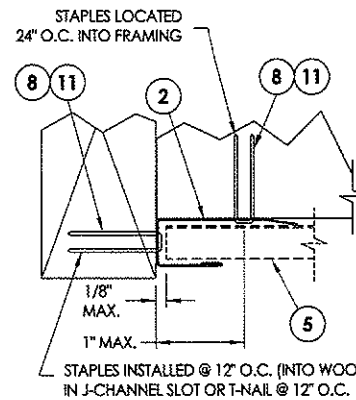
NOTE: WOOD FRAMING AND CONNECTIONS TO BE DESIGNED BY THE ARCHITECT OR ENGINEER OF RECORD



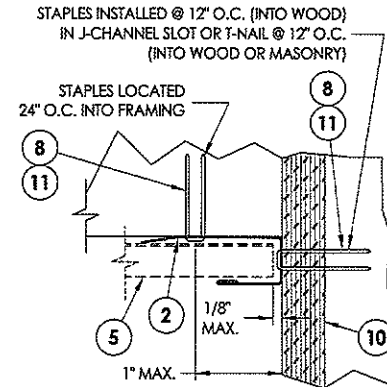
DETAIL "B"
F-Channel



DETAIL "A"
Fascia



DETAIL "D"
J-Channel
Fascia



DETAIL "C"
J-Channel

SUBSTRATE NOTES:
1. WOOD SUBSTRATE: G = 0.42 OR BETTER
2. MASONRY SUBSTRATE: 3,000 PSI CONCRETE (ACI 301) OR HOLLOW BLOCK (ASTM C90).



Documents Prepared By:
Lyndon F. Schmidt
P.E. No. 43409

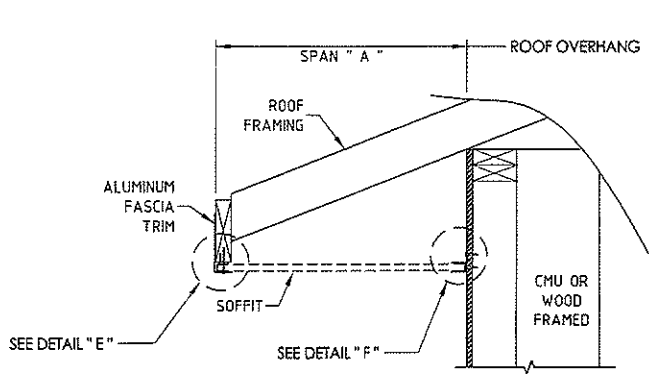
R.W.
BUILDING CONSULTANTS, INC.
P.O. Box 230, Valrico, FL 33595
Phone No.: 813.659.9197
FBPE C.A. No. 9813

PRODUCT:		ALUMINUM SOFFIT	
		PART OR ASSEMBLY:	
		SOFFIT DETAILS & DESIGN PRESSURES	
NO.	DATE	BY	REVISIONS
1	03/02/15	JK	UPDATE TO 5TH ED. (2014) FBC
2	12/15/11	LFS	UPDATE FOR 2010 FBC
3	3/9/10	JK	ADD DETAILS
4	3/31/09	JK	ADD DETAILS
DATE: 1/9/09			
SCALE: N.T.S.			
DWG. BY: JK			
CHK. BY: LFS			
DRAWING NO.: FL-12019.1			
SHEET 3 OF 5			

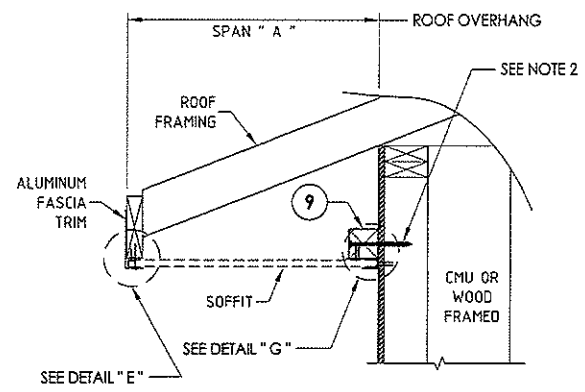
P:\Clients\American Construction Metals PERMANENT\Florida Product Approvals\FL-12019.dwg, 1:3

© 2009 R.W. BUILDING CONSULTANTS INC.

R:\Clients\American Construction Metals - PERMANENT Florida Product Approval\FL-12019\Drawings\Current\FL-12019.dwg, 1-4



SIDE VIEW - SINGLE SPAN w/F-CHANNEL
(Shown w/ truss/framing overhang)



SIDE VIEW - SINGLE SPAN w/J-CHANNEL
(Shown w/ truss/framing overhang)

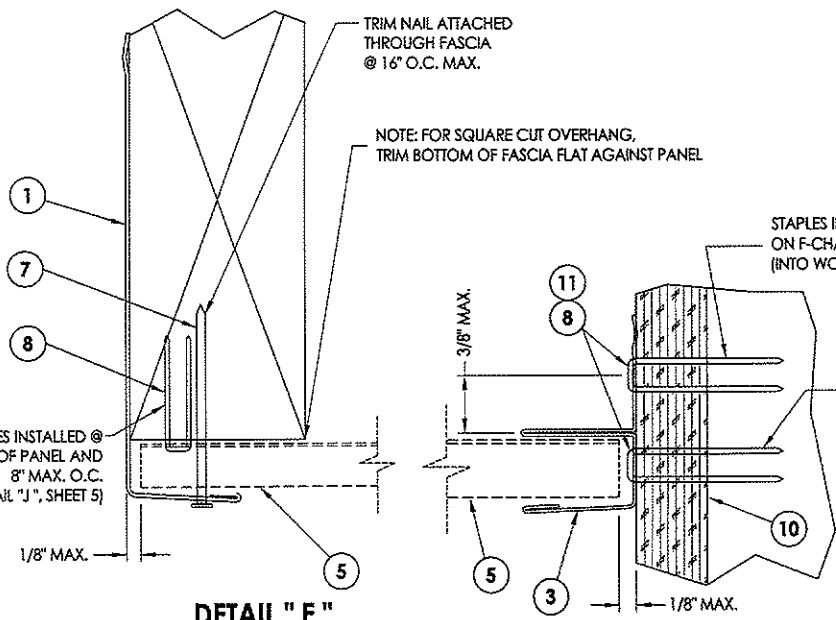
- CONNECTOR NOTES:**
- WOOD FRAMING AND CONNECTIONS TO BE DESIGNED BY THE ARCHITECT OR ENGINEER OF RECORD
 - 12d COMMON NAIL OR 3/16" #1W TAPCON CONCRETE SCREW (MIN. 1-1/4" EMBEDMENT) @ 24" ON CENTER

SINGLE SPAN LENGTH "A"	DESIGN PRESSURE (PSF)	
	POSITIVE	NEGATIVE
8"	+70.0	-141.0
10"	+60.0	-60.0
12"	+50.0	-50.0
14"	+38.5	-38.5
16"	+30.0	-30.0

L. SCHMIDT
ENGINEER
No. 43409
FLORIDA

R.W. BUILDING CONSULTANTS, INC.
P.O. Box 230, Valrico, FL 33595
Phone No.: 813.659.9187
FBPE C.A. No. 9813

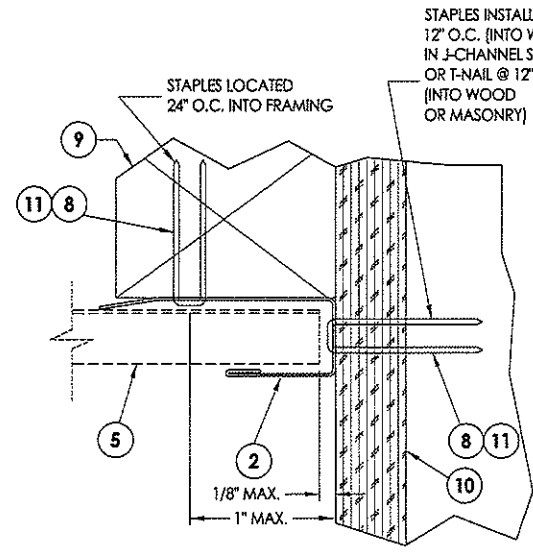
Documents Prepared By: *L.F.S.*
Lyndon F. Schmidt
P.E. No. 43409



DETAIL "E"
Fascia

DETAIL "F"
F-Channel

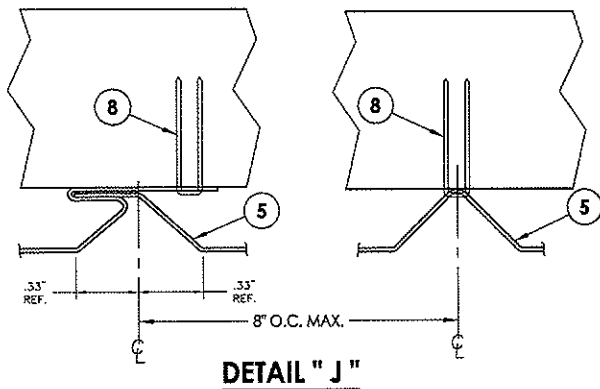
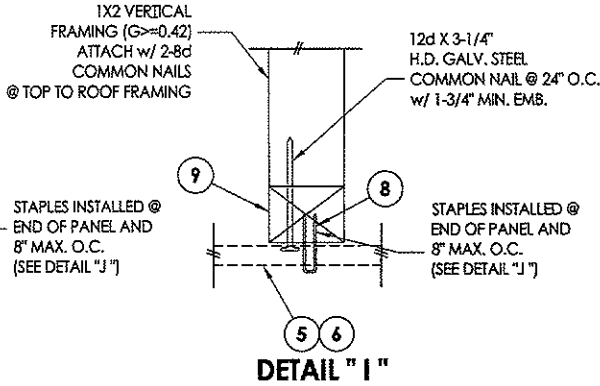
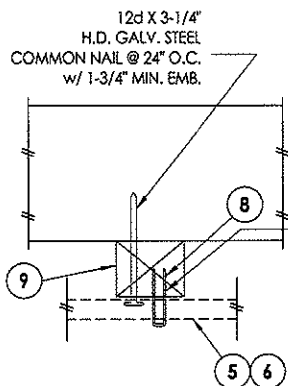
- SUBSTRATE NOTES:**
- WOOD SUBSTRATE: G = 0.42 OR BETTER
 - MASONRY SUBSTRATE: 3,000 PSI CONCRETE (ACI 301) OR HOLLOW BLOCK (ASTM C90).



DETAIL "G"
J-Channel

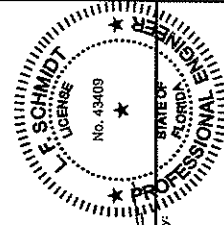
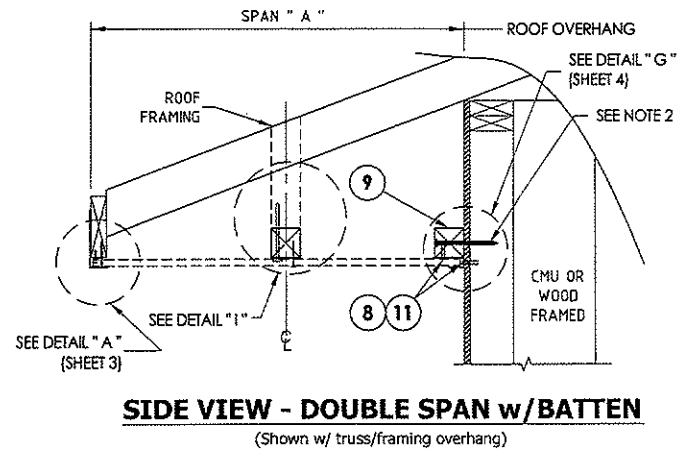
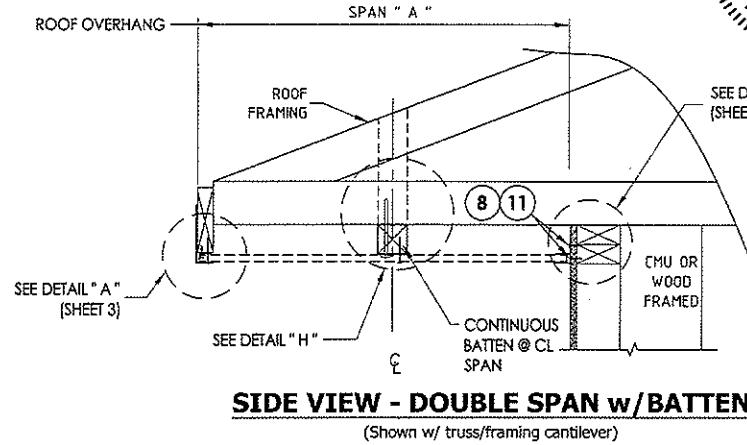
PRODUCT:	ALUMINUM SOFFIT	
PART OR ASSEMBLY:	SOFFIT DETAILS & DESIGN PRESSURES	
REVISIONS		
NO.	DATE	BY
4	03/02/15	JK
3	12/13/11	LFS
2	3/9/10	JK
1	3/31/09	JK
DATE: 1/9/09		
SCALE: N.T.S.		
DWG. BY: JK		
CHK. BY: LFS		
DRAWING NO.: FL-12019.1		
SHEET 4 OF 5		

ITEM	DESCRIPTION	MATERIAL
1	FASCIA .0215" THK. AL. 3105 - H14	ALUMINUM
2	"J" CHANNEL .0155" THK. AL. 3105 - H24	ALUMINUM
3	"F" CHANNEL .0155" THK. AL. 3104 - H19	ALUMINUM
5	QUAD 4 PANEL (.0115 OR .0135" THICK) AL. 3105	ALUMINUM
6	TRIPLE 4 PANEL (.0115 OR .0135" THICK) AL. 3105	ALUMINUM
7	#15 x 1-3/4" TRIM NAIL	S.S.
8	18" GA. X 1/4" SS STAPLE (w/ 7/8" MIN. EMBEDMENT)	STEEL
9	2" X 2" BATTEN STRIP (G=42 OR BETTER)	WOOD
10	APA B-C- GROUP 1 EXT. 15/32" PLYWOOD OR BETTER	WOOD
11	.097" DIA. T-NAIL (w/ 5/8" MIN. EMBEDMENT)	STEEL



TWIN SPAN LENGTH w/CONTINUOUS BATTEN "A"	DESIGN PRESSURE (PSF)	
	POSITIVE	NEGATIVE
16"	+70.0	-70.0
18"	+66.5	-66.5
20"	+60.0	-60.0
22"	+54.5	-54.5
24"	+50.0	-50.0

CONNECTOR NOTES:
 1. WOOD FRAMING AND CONNECTIONS TO BE DESIGNED BY THE ARCHITECT OR ENGINEER OF RECORD
 2. 12d COMMON NAIL OR 3/16" ITW TAPCON CONCRETE SCREW (MIN. 1-1/4" EMBEDMENT) @ 24" ON CENTER



Documents Prepared By:
 Lynden F. Schmidt
 P.E. No. 43409
 RW BUILDING CONSULTANTS, INC.
 P.O. Box 230, Valrico, FL 33595
 Phone No: 813.659.9197
 FBPE, C.A. No. 9813

PRODUCT: ALUMINUM SOFFIT
 PART OR ASSEMBLY: SOFFIT DETAILS, DESIGN PRESSURES & BILL OF MATERIALS

NO	DATE	REVISIONS	
		BY	BY
1	3/31/09	ADD DETAILS	
2	3/9/10	ADD DETAILS	
3	12/13/11	UPDATE FOR 2010 FBC	
4	10/02/15	UPDATE TO 5TH ED. (2014) FBC	

DATE: 1/9/09
 SCALE: N.T.S.
 DWG. BY: JK
 CHK. BY: LFS
 DRAWING NO.: FL-12019.1
 SHEET 5 OF 5