

PANEL INFORMATION

- Panel profile designed for thermal movement and water shedding
- Exposed Fastner metal roof panel
- Apply Perfect Rib with minimum of 30 pound felt underlayment over minimum 1/2" or 5/8" solid substrate
- Minimum roof slope 3:12
- Perfect Rib - Coverage: 36" nominal coverage with 3/4" rib height
Gauge: 29 gauge
Finishes: WeatherX™(SMP) or Acrylic Coated Galvalume

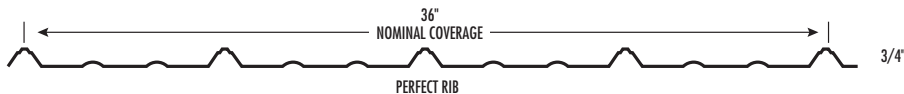
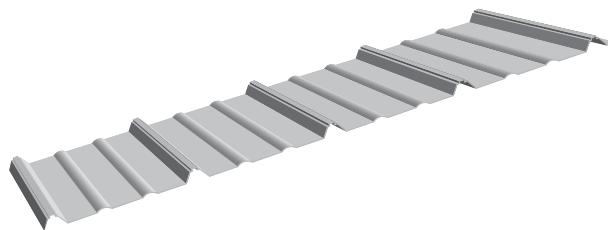
Exposed Fasteners

Architectural Panel

Solid Substrate

36" Nominal Coverage

Minimum Slope 3:12



**PERFECT RIB ALLOWABLE UNIFORM LIVE LOADS PSF
(3 or More Equal Spans)**

	Outward Uplift (Stress) Load						Inward (Gravity/Deflection) Load					
	1.5'	2'	2.5'	3'	3.5'	4'	1.5'	2'	2.5'	3'	3.5'	4'
Gauge 29	179	103	66	46	34	26	142	81	52	36	27	21

3/4" PERFECT RIB SELECTION PROPERTIES

Gauge	Width (in.)	Yield KSI	Weight PSF	Top in Compression		Bottom in Compression	
				lxx ln ⁴ /ft	Sxx ln ³ /ft	lxx ln ⁴ /ft	Sxx ln ³ /ft
29	36"	60	0.62	.0100	.0151	.0053	.0118

* Deflection = L/180

Fastening Detail



Perfect Rib

Availability

- Perfect Rib - Gauge: 29
Finishes: WeatherX™ (SMP) or Acrylic Coated Galvalume

Fastening

- For proper fastener application refer to fastener charts, illustrations, and installation instructions. Take care to select the correct fastening method.

Length

- Minimum factory cut length is 4'-0". Maximum recommended panel length is 40'-0". Longer panels require additional consideration in manufacturing and assembly. Please consult ACM for recommendations.

Coverage

- Perfect Rib panel at 36" nominal coverage with 3/4" rib height.

Substrate

- To avoid oil canning or deformation of the Perfect Rib panel apply over a minimum 1/2"* or 5/8"* plywood substrate and a plum, level, & square substructure.

* Reference the Fast Panel Installation Instructions for further information on the substrate.

Slope

- Perfect Rib roof panels minimum recommended slope is 3:12.

PANEL TESTING

- Finish meets or exceeds the ASTM B117 and ASTM G23 Accelerated Weathering
- 790 Class A Fire
- UL 2218 Class 4 Impact
- UL 580 Class 90 Wind Uplift